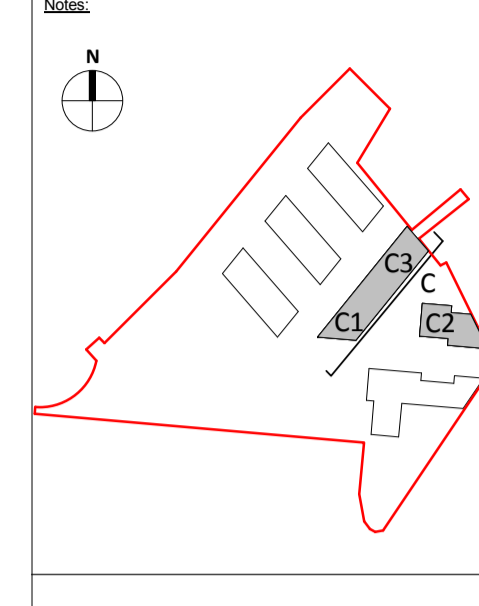


All dimensions to be checked on site. Figured dimensions take preference over scaled dimensions. Any errors or discrepancies to be reported to the Architects. This drawing may not be edited or modified by the recipient.

Copyright and ownership of this drawing is vested in RKD Architects, whose prior written consent is required for its use, reproduction or for publication to any third party. All rights reserved by the law of copyright and by international copyright conventions are reserved to RKD Architects and may be protected by court proceedings for damages and/or injunctions and costs. RKD Architects' Quality Management Systems are certified to ISO 9001:2015.



**Notes:**  
 All levels shown are to the Irish Transverse Mercator (ITM) and are displayed in meters (m). All levels shown relate to the Malin Head datum. All dimensions shown in millimeters (mm). Symbol indicates top of floor level and relates to Malin Head datum.

**MATERIAL FINISHES**

**BRICKWORK**

BR1	LIGHT GREY BRICK
BR2	LIGHT GREY RIBBED BRICKWORK
BR3	BUFF BRICKWORK
BR4	BUFF RIBBED BRICKWORK
BR5	RED BRICKWORK
BR6	DARK GREY BRICKWORK
BR7	DARK GREY RIBBED BRICKWORK
BR8	WHITE/ GREY BRICKWORK
BR9	WHITE/ GREY RIBBED BRICKWORK

**METAL CLADDING**

MP1	LIGHT GREY METAL FILIGREE PANEL
MP2	DARK GREY METAL FILIGREE PANEL
MP3	DARK GREY STEEL TRUSS SYSTEM
MP4	DARK GREY METAL PANEL
MP5	ALUMINIUM MESH METAL PANEL
MP6	PATTERNED METAL PANEL
MP7	WHITE ALUMINIUM CLADDING
MP8	GREY RIBBED METAL PANEL
MP9	LIGHT GREY METAL REVEAL
MP10	CREAM METAL PANEL
MP11	CORTEN STEEL HIGHLINE BEAM
MP12	REMOVABLE BESPOKE METAL SCREEN

**GLAZING**

GL1	WINDOW GLAZING SYSTEM
GL2	CURTAIN WALL GLAZING SYSTEM

**BALUSTRADE**

BAL1	STEEL PODIUM BALUSTRADE
BAL2	STEEL/ CORTEN HIGHLINE BALUSTRADE
BAL3	GLAZED SCREEN - TERRACE
BAL4	DARK GREY STEEL BALUSTRADE
BAL5	GLAZED SCREEN - PODIUM
BAL6	GLAZED BALUSTRADE - APARTMENT

**REVISIONS**

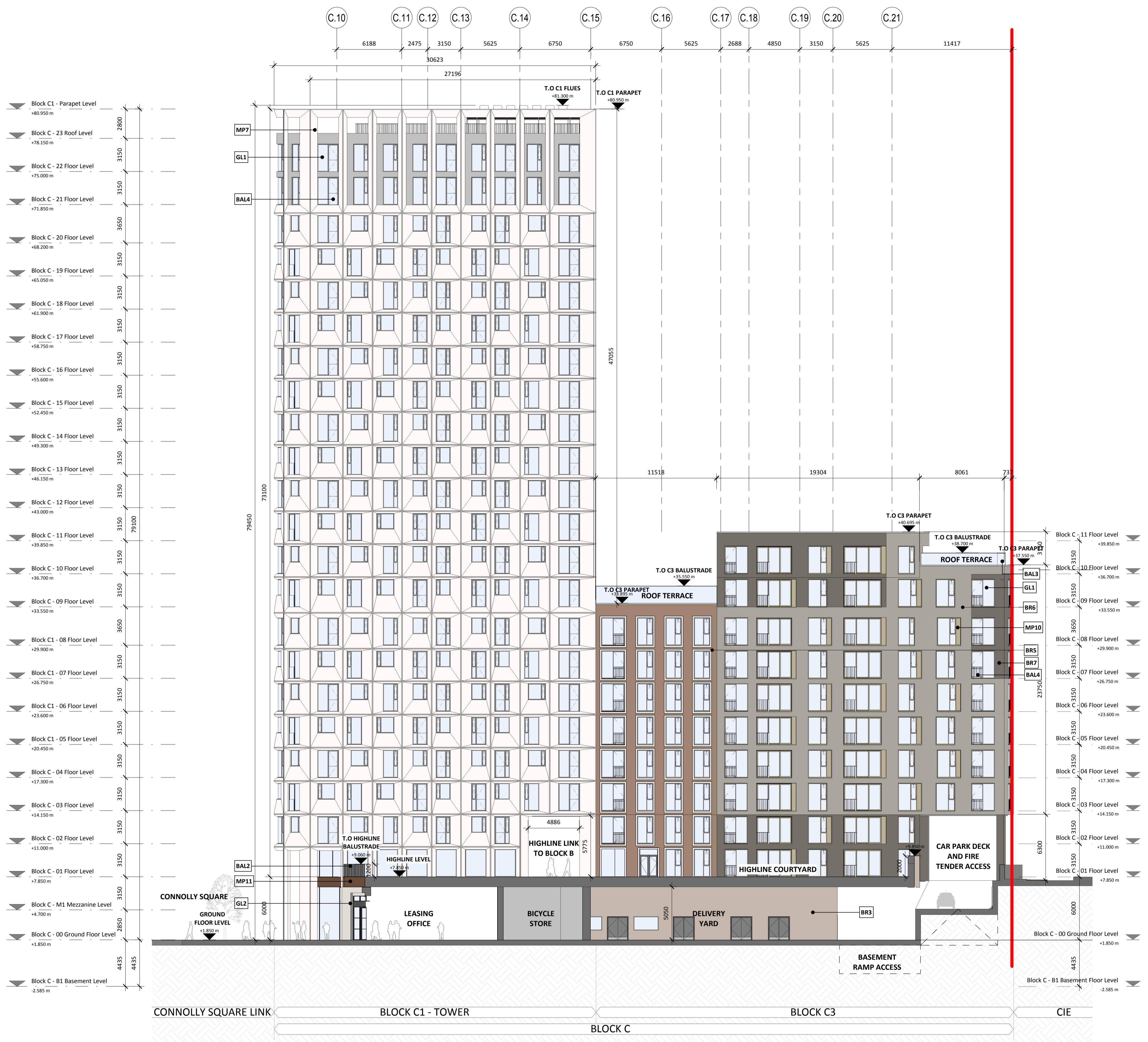
Rev.	Date	Issued for Planning Application Submission	Description
A	OCT 2019	Issued for Planning Application Submission	

**STATUS: PLANNING**  
**PROJECT: THE CONNOLLY QUARTER**  
**PROJECT ADDRESS: Lands to the Rear of Connolly Station, Dublin 1**  
**DWG TITLE: BLOCK C SECTION B-B**  
**DWG NO: 18135-RKD-C-ZZ-DR-A-1204**

**REV. A** PROJECT NO. 18135 SCALE 1:200  
 DATE JUN 2019 DRN CNAB CHK CS

**RKD**  
 58 Northumberland Rd, Ballsbridge, Dublin 4, D04 W9P6, Ireland. +353 1 668 1055, rkda@rkd.ie, rkdi@rkd.ie

**ARROW**  
 Name Farinagade 13, 41 th, DK-1364 Copenhagen K, Denmark. +45 4236 2860, info@arrowarchitects.com, www.arrowarchitects.com



**B-B BLOCK C - SECTION B-B**  
 1:200